

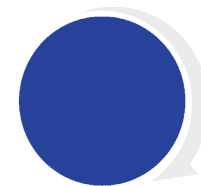
three 60

Single-Use Aseptic Sampling System

INSTRUCTIONAL MANUAL

Three60 Valve Instructions

Pinch and Cut Disconnect Instructions



three 60

THREE60 SAMPLING SYSTEM VALVE INSTRUCTIONS

PLEASE READ THESE INSTRUCTIONS CAREFULLY BEFORE USE

With the three60 system, there are no parts to be assembled, disassembled or cleaned and unlike other single-use sampling systems, no additional tools are needed. The entire set can be easily applied to your fluid holding vessel or transfer line and four samples can be removed in only a few minutes.

Three60 is compatible to your vessel with either a NA port or a 1½" sanitary connector; no expensive hardware is needed. Each three60 package contains a valve and four assemblies with Pinch and Cut Disconnections.



STEP 1: INSTALLATION OF UNIT

- Remove sample system from sterile package.
- Apply a gasket, Three 60 unit and clamp to flange interface of your vessel (1½" sanitary connector or a NA port).
- Position valve with white depressible tab pointing upward and the turn arrow pointing clockwise for easy push and turn operations.
- Conduct your "steam in place" or "clean in place" process.



STEP 2: START SAMPLING

- When you're ready to take a sample, slightly depress tab feature and begin to turn main body clockwise.

CAUTION: Excessive pressure on the tab may cause damage and compromise the locking action.

- Once the turn is initiated, release the tab; the tab will lock when the open position is reached. Immediately release the tab, as it will lock when the open flow position is reached.

CAUTION: Holding tab as you turn may cause turning past the flow opening.

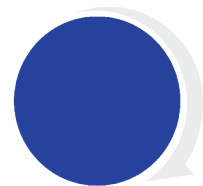
- Fill product to the volume desired. For 250 ml or heavier samples, support the bag with your hand.

CAUTION: Observe the speed of filling to avoid overfilling.



STEP 3: CLOSE SAMPLING

- When sample fill is complete, press the depressible tab and again grip and turn the body clockwise.
- Again, release the tab immediately when the turn is initiated; valve will lock in to place when the next closed position is reached.



three 60

PINCH AND CUT DISCONNECTION

The Pinch and Cut Disconnection is the answer to the industry's need for a simple method of sealing and disconnecting a tube. With only the operator's hands, the device will pinch the tube closed, seal the tube ends and "cut" them apart; thus enabling a quick disconnection of the sample bag.

PRE-USE DIRECTIONS

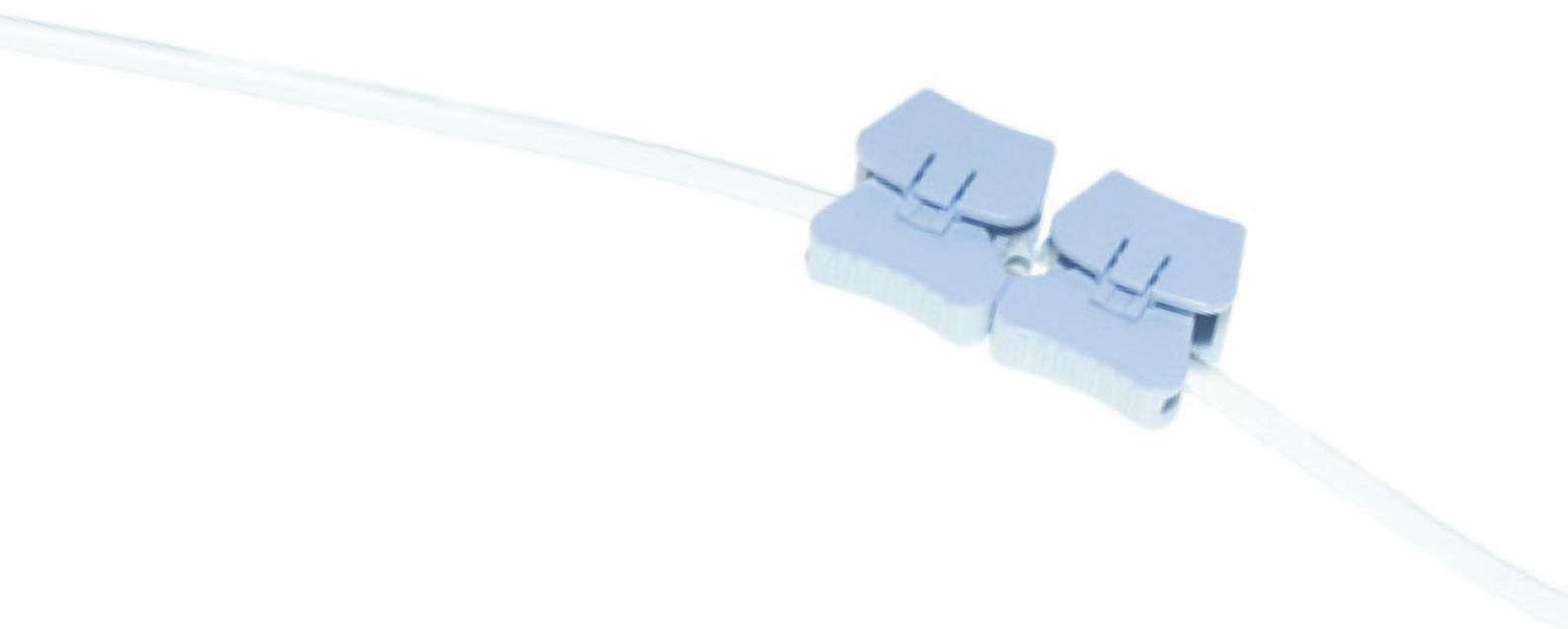
Check the clamps to ensure they are not pinching the tubing and cutting off the flow path by gently pulling each clamp upward, but not disconnecting them. The Pinch and Cut is now ready for fluid transfer.

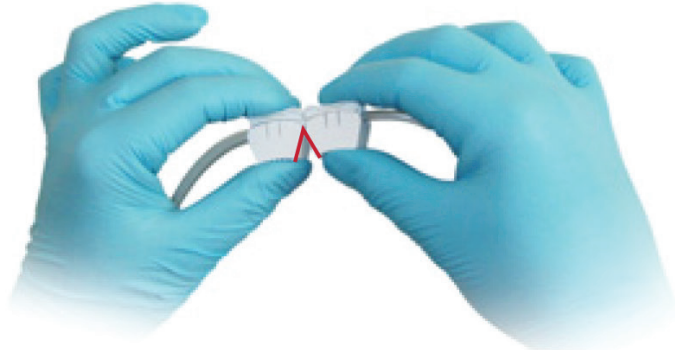
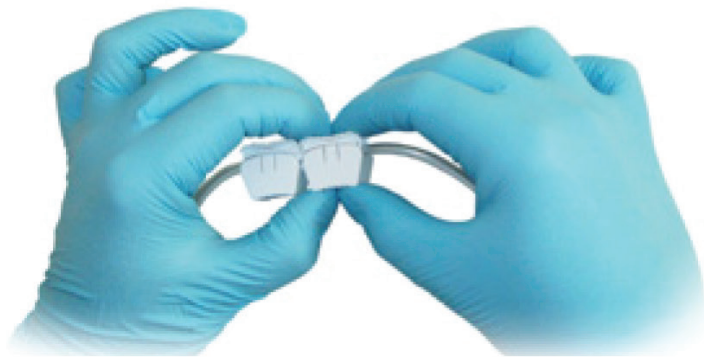
PINCH AND CUT DIRECTIONS

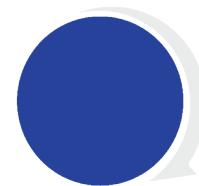
1. First, after the fluid transfer is complete, using both hands, grip the cutting clamp closest to the sample bag and press down until the audible click is heard and the top rests on the lip.

NOTE: It is CRUCIAL that the clamp closest to the sample bag is engaged first.

2. Repeat the same action as step one with the clamp closest to the valve.
3. When you are sure the lock has engaged, grip the clamps with both hands and the "V" facing you.
4. Press thumbs towards each other. This action will break the clamps to allow separation. Continue the motion until the tube separates. The clamp is permanently closed and integrally sealed.







three 60

THREE 60 SINGLE-USE ASEPTIC SAMPLING SYSTEM

Taking a sample mad to be simple

The simple design behind the three60 Sampling System allows you to take a representative sample of your product with minimal effort.

For a completely sterile transfer, use a CIP or SIP process to prepare your tank. The pre-irradiated bags and assemblies will ensure a sterile fluid path while the quick-turn valve and Pinch and Cut Disconnections maintain sterile transfer and removal.

SINGLE-USE SOLUTIONS

Single-use systems are providing improved sterility and reduced cleaning requirements over traditional sampling systems across all applications in the Bio-Pharmaceutical Industry.

The three60 Single-Use System brings the same advantages to sampling resulting in a quicker solution and a safer process.

EFFICIENT

With the three60 system, there are no parts to be assembled, disassembled or cleaned and unlike other single-use sampling systems, no additional tools are needed. The entire set can be easily applied to your fluid holding vessel or transfer line and four samples can be removed in only a few minutes.

Three60 is compatible to your vessel with either a NA port or a 1½" sanitary connector; no expensive hardware is needed. Each three60 package contains a valve and four assemblies with Pinch and Cut Disconnections.



KEOFITT A/S
Industrivænget 6-8
DK-5700 Svendborg
Denmark

Phone +45 6316 7080
Fax +45 6316 7081

info@keofitt.dk
www.keofitt.dk

